

# ON A MISSION

Your Wellington City Mission Magazine

wellington  
citymission

BE  
SOMEONE'S  
STAR

Issue 4 2017



## A BETTER FUTURE FOR OUR DAUGHTER

Just over a year ago, my husband and I felt like we were sinking. A lot of our problems came from not having enough money. I was looking after our newborn baby Lilly, and my husband could only get part-time work. Our main issue was that we were living in a mouldy one-room studio. It was so hard to stay healthy, and we all got sick a lot.

Obviously our biggest concern was always for Lilly, but I've also been going through some pretty big operations on my legs and my recovery was always very hard. As well as these health issues, we never felt safe in our neighbourhood. There were lots of young people drinking and doing drugs, and the police were always around. My husband was working a night shift, so I felt really frightened about being left alone with Lilly. We tried to apply for a new house but were

told it wouldn't happen because we already had one. A private rental was simply out of our budget, so we just couldn't see a way out.

The Mission's social worker, Trudy, came into our lives at the perfect time. After having to make hard choices about what we would have to go without each week, she brought us parcels filled with healthy food, and nappies for Lilly, to help lower our costs. Her visits and encouragement gave us new hope.

A couple of months later after an operation, the hospital wouldn't release me because they knew I wouldn't recover properly in our unhealthy home. Trudy stepped in straight away to advocate for us with Housing NZ, Work & Income, and even our local MP to find emergency accommodation in a motel, then three months later we moved into our

new home. We'll always remember having Lilly's first Christmas here. We were together as a family in our beautiful new home, which was full of love and Christmas spirit. Trudy was a big part of that, because she'd given us an amazing surprise a couple of days before Christmas. She visited us with toys and a bag of Christmas food – which we would otherwise have gone without.

It's a huge relief knowing that our Lilly is in a safe and healthy place.

Now we're really in the first stage of our plan to build a better life for our family. With Trudy's support, my husband found full-time work as a courier driver. Our budget is still pretty tight, but we love our new home. It's clean and dry, and the neighbourhood is really friendly. It's a huge relief knowing that our Lilly is in a safe and healthy place. We're really looking forward to this Christmas too, and my husband is planning to take some time off work so we can all spend it together.

Earlier this year, we finished receiving help from Trudy. We're so thankful for all the help The Mission has given us, and we're sure that next year will be even better. We feel like anything is possible, but most of all we are so excited for Lilly to have a good future.

*It's a real privilege seeing families like this transform their entire lives so much, with just the right help.*

BE  
SOMEONE'S  
STAR

wellington  
citymission

Our Christmas Star Appeal is on now!

There are so many ways you can get involved this year. So whose star will you be?

See our special insert inside to find out more...

## THANKS TO YOUR HELP...

JULY – SEPTEMBER 2017 KEY STATISTICS

SEE BACK PAGE FOR MORE FROM OUR PROGRAMMES

7,471

MEAL SERVINGS WERE PROVIDED IN THE DIC

DROP-IN CENTRE  
INDEPENDENCE

FINANCIAL MENTORING  
CLIENTS REDUCED  
THEIR COMBINED  
ACCRUED DEBT BY

\$39,987

CSA CLIENTS  
WERE  
ASSISTED  
TO RESOLVE

154

HOUSING, SOCIAL,  
HEALTH &  
FINANCIAL ISSUES

COMMUNITY SERVICES ADVOCATE

STAFF HELPED

10

FAMILIES TO  
IMPROVE THEIR  
HOUSING  
SITUATIONS,  
6 OF WHICH  
WERE  
PREVIOUSLY  
HOMELESS

FAMILIES



★ **Charlie**  
BNZ Partners  
Wellington

*"Our BNZ Partners team in Wellington is really delighted to have been a supporter of The Mission over the last four years. Our building at Harbour Quays gave us a unique opportunity for some fundraising activity (parking for major Stadium events) which the team has run very effectively. We wanted to do good things with the money we raised and, each year when it came to choosing which organisations to support, The Mission was at the top of the list. It's important to us to support organisations supporting our local community, organisations that truly make a difference for those who are vulnerable and at risk."*

## WHAT IT MEANS... TO BE SOMEONE'S STAR!



★ **Margaret**  
New Zealand  
Transport Agency



*"It's a privilege for us at the New Zealand Transport Agency to support the City Mission. We get behind their work because we believe that access to food, warmth and shelter is a basic human right. We know that for many it's a constant struggle to keep themselves and others warm, feed themselves and their families, and maintain the security of their home, and we want to make a difference. We have a group of talented knitters who create woollen beanies during winter, and we're excited to donate food and sell raffle tickets again during the vital Christmas appeal."*

To find out more about being someone's star, visit [ChristmasStar.co.nz](http://ChristmasStar.co.nz)

We're extremely grateful for the support of many community-minded groups across Greater Wellington. One of our longest-standing partnerships has been with the Mission Auxiliary Committee, an amazing group of women who support The Mission in a variety of ways. Recently we spoke with Auxiliary Chairperson Pip Meehan to find out more about the Auxiliary, what they do, and why they choose to provide such fantastic support.



### SUPPORTER PROFILE: PIP – MISSION AUXILIARY

#### **What is the Mission Auxiliary Committee?**

The Auxiliary is a group of local women who are passionate about Wellington and want to support people in need. It has been around a long time – the original committee was actually set up back in 1984. I've been part of the current committee for about four years, and I recently took over the role of Chairperson. The number of people in the group fluctuates; we've got nine at the moment. As a group we support The Mission by running fundraising events and volunteering. We meet each month to plan our fundraisers and manage our volunteer rosters.

#### **How do you support The Mission throughout the year?**

One way we help is by raising funds. We usually hold two fundraising events each year, one of which is a movie night. We just held this year's movie fundraiser in August and it was fantastic! We filled two theatres at the Penthouse Cinema with 235 people. When we plan events like this everyone

in the committee helps in some way, from booking the cinema to organising drinks and sweets for the night. Then we work together to sell as many tickets as possible!

Another way we help is by volunteering, which we all really enjoy. Every week we help make up food parcels and sort clothing donations for the City Mission Stores, and we volunteer at special events like the Food Show.



*I look at my gorgeous 19-month-old grandson and I think, wouldn't it be great if every child had the same chance to be well fed, safe and happy?*



We've done other fundraisers over the years too, like creating special cook books. We put these books together with donated recipes

from local restaurants and then sold them with all funds going to The Mission.

#### **What is the Auxiliary doing this Christmas?**

One of the main ways we're helping is with the Christmas raffle. Our committee is assisting with overseeing the raffle, and we'll also be getting out and selling as many tickets as we can. In December we also volunteer to sort all the amazing food and toy donations that come in. This is something I really like doing, especially sorting the toys for kids. We all

collect on Street Day too!

#### **Why do you choose to support The Mission?**

I know there are families in our community living on the minimum wage that are really struggling. I've always wanted to do something to help families like this, and I'm especially passionate about helping children. I look at my gorgeous 19-month-old grandson and I think, wouldn't it be great if every child had the same chance to be well fed, safe and happy? When I'm packing a food parcel, or raising money through an event, it's amazing to know that I'm helping a family or child who are struggling. The little that we can do to help, it all makes a difference. I encourage other groups to get involved in supporting The Mission in whatever way they can. In the Auxiliary we all really enjoy supporting this cause and it's so rewarding!





## A HOME TO CALL MY OWN

I lived in my van for over three years when I first moved to Wellington. At the time my mind wasn't in a good way, and I had ongoing bronchitis and stomach problems that needed operations. I couldn't get them done though because there was a risk that I would have died if I went back to the van. I had very little money, and mostly kept to myself. Being homeless didn't feel good at all. I'd had some bad experiences with government agencies and didn't trust them. I honestly thought that nothing could be done to change my situation.

A friend saw that I really needed help, so after some persuading we went into The Mission's Drop-in Centre together. Soon I started visiting regularly for the good food and company, and to use the shower. I liked The Mission's staff straight away. They knew

that needing food was just a symptom of something greater, and you could tell they genuinely cared for people. The human contact and the company was so important. Even if they didn't realise it, the staff were making me feel a lot better and breaking down the barriers I'd put up. They even gave me things like a new pair of shoes and a sleeping bag, which I was very grateful for.

When I really needed help sorting out my benefit (sickness) I approached the Community Services Advocate, Rowan. It was a huge relief seeing how she could work with the agencies I'd previously struggled with, so together we applied for housing as well. With a bit of help a mountain was moved, and I got a house. I was absolutely elated – something I hadn't felt for such a long time. The Mission then

helped turn the house into my home, by providing some food parcels and furniture to start me off.

“The human contact and the company was so important. Even if they didn't realise it, the staff were making me feel a lot better and breaking down the barriers I'd put up.”

I haven't got much money after I pay bills and old debts, so at first it was a little hard getting my head around living in a house and keeping on top of the costs. I know The Mission is always there for me though, which is something I didn't have before, so I'm confident that I'll manage. I still visit the Drop-in Centre as much as I can, they're a bit of a family really. My health has improved immensely too, I've had my stomach operations now, and was able to rest and recover in my home.

Looking ahead to Christmas I feel a lot safer. It's nice to know I'm part of a community at what can be a pretty lonely time. My home really feels like a mansion compared to that van. I feel so much better about my life, and I reckon I might even live a few years longer too!



## MORE THAN JUST FOOD – THE MISSION'S FOODBANK AT CHRISTMAS

The Foodbank is one of the most well-known parts of The Mission, particularly at Christmas when food is a key focus. However a little less known is the critical role it plays in people's lives year-round. It supplies food parcels to families and seniors working with our social workers and financial mentors, along with meals in the Drop-in Centre and for our Youth students.

At Christmas, demand for food support is high, as people have a lot of extra financial strain. For those who are working on improving their situations this means a lot, both practically and emotionally. Foodbank Coordinator Louise Mearns explained: “No matter how much money you have,

you're always going to want to provide a special time for your family, and feel part of a community. It's about more than just having a Christmas meal, it's a really important time for people to strengthen their family connections, and move forward to the year ahead.”

To extend our reach beyond those we directly work with, The Mission also provides food for dozens of other agencies. We work closely with these agencies throughout the year, and know that by working together we can

have even more of an impact in Greater Wellington. Bonnie Mawson from Birthright Wellington told us: “A lot of our families are really struggling at Christmas. We provide them with treats and presents, and just make it a really special time. We wouldn't be able to do that without the City Mission. It's just an example of the amazing work that we can do when we partner together, to support more families out there in the community.”

It's Mission supporters who make all the work we do possible. We're so fortunate to have amazing people who donate food and volunteer their time year-round. Those who generously give financial donations play a vital role as well. Donated funds help to

meet our running costs so that now and into the new year, skilled social workers, financial mentors, and advocates can work alongside clients to empower themselves – rather than simply giving them resources. Louise said: “I think Wellingtonians realise not everyone has the means to celebrate Christmas, so they want to give. They might not see the direct impact, but they know their contribution is going directly to a family or individual in need. Having that compassion is what it means to be someone's star.” Fortunately for Mission staff, and the community agencies we're able to support, we get to see the relief and joy when someone receives the food parcel that they desperately need.

We're incredibly grateful to be part of the Greater Wellington community! Thank you to everyone who has or will support our Foodbank this Christmas. You are making a big difference in people's lives in a much larger way than simply helping them put food on their table.

### Last Christmas:

- Approximately **3,000** people received food from The Mission
- We distributed food and gifts to **31** other agencies including Womens' Refuge and Newtown Union Health
- We had around **200** extra volunteers

# LOOKING FORWARD

## HOW ABOUT BEING SOMEONE'S STAR THIS CHRISTMAS?

Help us to make a difference across Greater Wellington by getting involved in one of our Christmas Star Appeal activities!

### ★ WALK OF FAME ★

Get your name on our Christmas Walk of Fame when it's displayed on Wellington's waterfront! You and your business, organisation, team, group, family or friends can get your name or logo on our Hollywood Walk of Fame-style stars when they're displayed from **1-26 December**.



### ★ STREET DAY ★

Get involved in our annual Street Day Collection on **Friday 1 December**! We rely on hundreds of volunteers to help us collect across Greater Wellington on Street Day and we'd love to have you as part of the team.

### ★ STAR CAR CHRISTMAS RAFFLE ★

We're holding another Christmas Raffle this year with more than **\$25,000** worth of prizes up for grabs – including a 2017 Mitsubishi Mirage! You can purchase tickets from our Star Car when it parks up in malls and supermarkets across the region during November and December, or sell tickets in your workplace, sports club or group.



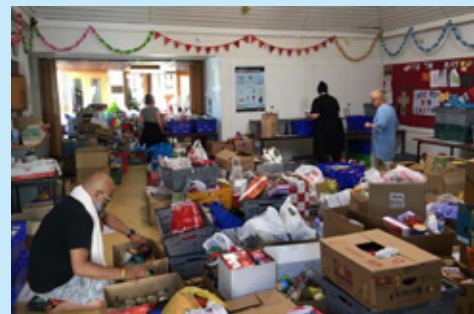
### ★ DONATE ONLINE ★

We're so grateful for the generous financial donations people make throughout the appeal. This support ensures we can continue helping people in need long after the Christmas decorations have come down.

These are just a few of the ways you can get involved this Christmas.  
For more details check out our special Christmas insert in this magazine or head to  
**ChristmasStar.co.nz**

## LOOKING FORWARD TO A HOLIDAY!

Christmas is a busy and exciting season for The Mission! While we absolutely love what we get to do, we're also looking forward to having a summer break.



We wanted to share with you our opening hours over the holiday season:

- Our Newtown office will be closed from 12pm on Friday 22 December.
- We will open for essential services only on Thursday 28 December from 10.30am – 12pm.
- We will re-open for the new year on Wednesday 3 January at 9am.

We wish you all a safe and happy Christmas!



## TRIC'S MISSIONS

### WELLINGTON CITY MISSIONER



I think it's quite fitting that at The Mission we encourage people to be someone's star at Christmas. One of the most interesting aspects in the Christmas story is the Christmas star – said to be an amazing astronomical occurrence unlikely to occur again for 5,000 years. This star caused wise ones from a far away country to leave the comfort of their homes and the things they knew, to travel into the unknown.

Some call them kings, some call them wise men – maybe women were with them too. These intrepid travellers arrived in Jerusalem expecting to meet a new king, but there wasn't one in the palace. Instead they continued to follow the star into the countryside, to a small town, and then to a stable where they found a poor, homeless, illegitimate baby. They brought gifts with them. Not the normal baby gifts, but gold, frankincense and myrrh. They were symbols to show who this baby was, and was going to become. Gold for a king, frankincense for a priest, and myrrh the spice of death – a hint at the journey Jesus would make.

In modern times, it is easy to focus on what is happening for ourselves at Christmas. The fun we will have, the people we will be with, and the things we will enjoy. But in the story of the wise ones following the

star we are reminded that we are called out of the comfort of our lives, to bring along what we have, and to encounter something unexpected. At The Mission we are so grateful to all who bring their gifts and share them with others at Christmas so that all of us might experience fullness of life.

In this way we all become Christmas stars. Our Christmas Star appeal call says it all: "More than just meeting someone's physical needs, being a star is about bringing hope, joy, courage and confidence to those who are struggling. By showing them someone cares, you make a difference that lasts long after the Christmas decorations have come down."

Every blessing this Christmas Season.

Rev Tric Malcolm  
Email [tric@wgtncitymission.org.nz](mailto:tric@wgtncitymission.org.nz)



# OUT & ABOUT

## SLEEPING ROUGH TO SUPPORT WELLINGTON'S HOMELESS

New Zealand's housing crisis is having a devastating impact on our most vulnerable families and individuals, but we believe everybody deserves a safe and secure home! That's why we took part in the awareness and fundraising event '14 Hours Homeless' on Friday 13 October.

Hundreds of people in cities throughout the country slept rough for the night – on cardboard, in a car, or on a couch – and raised funds for local social services that work with the homeless. Here in Wellington around 120 people took part, including many amazing people who fundraised for The Mission!

We're so grateful that over \$5,000 has been raised for us so far! This will go towards our work with families who are burdened with housing issues such as homelessness, overcrowding, or living in substandard conditions. Overall the event has raised over \$40,000 so far in Wellington and over \$76,000 nationwide!

We'd like to say a huge thank you to the incredible people who took part and all of their amazing sponsors. Together, we are truly making a difference!



## #STARTINGXI COLLECTION

We had so much fun at the Wellington Phoenix season opener on Sunday 8 October! We teamed up with supporters clubs Yellow Fever and LFC Wellington once again for a special collection at the game.

In honour of the Phoenix's 11th season we asked people to donate cash or supply our #StartingXI – the 11 items our Foodbank needs the most! People could donate at the game, or drop donations off at Four Kings, Backbencher or Churchill beforehand.



Three lucky people who donated at the game were picked from the crowd at half-time and won family passes thanks to the Wellington Phoenix!

We're excited to announce that in total we were able to fill approximately 5 large collection bins with our most-needed food items, and collect almost \$1,500 in cash!

Special thanks to everyone who donated, and to Yellow Fever and LFC Wellington for making this collection happen.

so we're really grateful for the teams who come in and help out – even long before it starts to feel "Christmassy"!



## CHRISTMAS PREP STARTED EARLY!

At the start of September this amazing volunteer team from Aon came in to make up hundreds of our Christmas Star Boxes. These boxes are now out in businesses across Greater Wellington and being filled with food and gifts! Our thanks go to Aon for making this possible.

Christmas is our busiest time of the year,

## NEW CITY MISSION STORE IN PETONE!

In August The Mission joined Petone's lively op-shopping scene with the launch of our brand new City Mission Store on Jackson Street!



*Our new store at 228 Jackson Street, Petone.*

The store officially opened on Friday 25 August after a special launch event the evening before. Just like the Wellington City counterpart on Taranaki Street, the Petone store is home to quality recycled goods such as clothing, books, furniture and household items. Everything bought or donated supports our work in the community.

Opening a store in the Hutt Valley was a particularly important decision because of the extensive work we do in the area. Last year, 54% of the families and 74% of the seniors we worked with lived in the Hutt Valley.

We've been blown away by the support the store has received! Thank you to everyone who has come in to shop or donate. If you haven't visited yet, please pop by at 228 Jackson Street. Opening hours are from **9am – 5pm Monday to Friday and 10am – 3pm Saturdays.**

To keep the store running we're always in need of more quality recycled goods! Items can be dropped off during opening hours, or collected for free from homes and workplaces. If you have something to donate please call **0800 245 542** or email [collect@citymissionstore.nz](mailto:collect@citymissionstore.nz).



*David, manager of our new Petone store.*

# A WORD FROM MARIA – GENERAL MANAGER, OPERATIONS



As always, 2017 has been a busy year at The Mission. Now as we head into Christmas, it's a time for reflecting, acknowledging challenges, celebrating successes, and readying ourselves for Christmas Day and the coming year.

A real highlight has been seeing our rangatahi (young people) at Mission for Youth achieving the personal and academic goals they set out to achieve at the start of the year. One example was a girl who was extremely frightened of heights going on a flying fox - encouraged by the other students. A moment like this might seem relatively inconsequential. But by taking small steps people gain the confidence to take even bigger steps, for example to achieve a qualification, apply for jobs, or behave differently from their peers.

During this year, the vibrancy of the Drop-in Centre has been amazing. There, community connections and interpersonal relationships are being built through the sharing of meals - leading to regular engagement or

referrals to other services for wider change. We've found that more of the families our social workers are working with are needing support to meet their most basic needs. However so many families have gone on to tell us that they have improved their quality of life, and their kids now have the opportunity to do well in life.

Now, in the lead-up to Christmas Day, we are visiting or connecting with everyone we're working with to make sure they are on track, and ensure that every child gets a gift. We're also sharing resources with dozens of other agencies we collaborate with, to support their clients and reach as many people in Greater Wellington's communities as we can. For us, it's all about strengthening people's resilience, and connections with their community. This way they will be able to cope with any challenges and not only be in the position to enjoy their Christmas, but also look forward to the coming year - seeing it as a chance to continue moving forward.

When Mission supporters respond to our question "whose star will you be this Christmas?" by donating goods, money or time, I see it as them inviting another person to celebrate Christmas alongside them. It shows those who are vulnerable that is there someone who cares about what happens in their lives, and it fosters feelings of connection and belonging. Time and time again we see people The Mission has helped, helping others. Together we are all influencing beyond just our own circles. No matter how small a contribution might seem, it can have an enormous impact, and create transformation - either immediately or somewhere down the road. The main thing is that we are planting that seed in someone's life.

JUL - SEP 2017 KEY STATISTICS

## MISSION FOR FAMILIES

**599**

Staff made 599 contacts (face-to-face, phone, and email) with families

**287**

Staff provided 287 household resources and food parcels to families

## MISSION FOR YOUTH

**42**

Students took part in 42 Education Outside the Classroom sessions and life-skills workshops

**295**

Staff made 295 contacts (face-to-face, home, phone, and email) with parents and caregivers

## MISSION FOR INDEPENDENCE

**1,906**

Volunteers gave 1,906 hours of their time working in our Drop-in Centre and Foodbank

**39**

There were 39 new clients seeking budgeting assistance

## MISSION FOR SENIORS

**155**

Older people achieved 155 of their personal goals (in areas such as health and wellbeing, social activity and safety)

**95**

95 seniors were supported by Mission for Seniors caseworkers

## KEMP HOME & HOSPITAL

**371**

Kemp residents participated in 371 planned recreational activities and community events/outings

**5,702**

Kemp provided 5,702 bed nights of accommodation for 73 people

## IF YOU WANT HELP, IF YOU WANT TO HELP

If you or anyone you know wants the help of any of our services, please drop in or phone our Newtown office.

If you want to help - thank you! We rely on the goodwill of Mission supporters so we can continue our work throughout the Greater Wellington region. Whether it's an offer of goods in-kind, volunteer hours or monetary donation, we are always amazed by the generosity and community spirit people demonstrate on a daily basis.

Please see the contact details provided, or for information on ways to support, please go to the 'Want to Help' page of our website.

### Call in, or contact our Newtown office and Drop-in Centre:

19 Gordon Place, Newtown, Wellington  
PO Box 7477, Newtown, Wellington 6242  
T: (04) 245 0900  
E: enquiries@wgtncitymission.org.nz

### Kemp Home & Hospital:

21 Te Pene Avenue, Titahi Bay, Porirua  
PO Box 52081, Titahi Bay, Porirua 5242  
T: (04) 236 8099  
E: info@kemphome.co.nz

### City Mission Stores:

Corner of Taranaki & Abel Smith Streets, Wellington  
228 Jackson Street, Petone  
T: 0800 245 542  
E: welcome@citymissionstore.nz

[wellingtoncitymission.org.nz](http://wellingtoncitymission.org.nz)



The Wellington City Mission



@wgtncitymission



@wellingtoncitymission





## How about being someone's star this Christmas?

Last Christmas it was heart-warming to see thousands of people across Greater Wellington come together to be stars to people in need. Together we made a life-changing difference across our region!

This year we want to make an even bigger difference, so we're calling on you to once again "be someone's star" by getting involved in our Christmas Star Appeal.

Being someone's star can be as simple as donating funds or food – but the impact you make is tremendous.

So whose star will you be? Get involved in one of our Christmas Appeal activities today!

### WALK OF FAME



We can't wait to have our Christmas Walk of Fame displayed on Wellington's waterfront from **1-26 December!** You can get your name or logo on a Hollywood Walk of Fame-style star, and each one represents families being supported this Christmas and beyond.

The stars range in price, starting at **\$100** for an Individual/Group Star – the perfect star to purchase for your family, friends or colleagues! If you want to get your business involved, Business Name Stars are available for **\$250** and Business Logo Stars for **\$500**.

Last year we introduced an exclusive new Gold Star! We're looking forward to having these as a special feature on the Walk of Fame once again.

Visit [ChristmasStar.co.nz/wof](http://ChristmasStar.co.nz/wof) to purchase or email [enquiries@wgtncitymission.org.nz](mailto:enquiries@wgtncitymission.org.nz) to find out more.

### STAR CAR RAFFLE



After an exciting debut last year we're holding another Christmas Raffle – with more than **\$25,000** worth of prizes up for grabs! Tickets cost just **\$5 each**, or **\$20 for a book of five**. Each one puts you in the draw for one of nine amazing prizes including a 2017 Mitsubishi Mirage, a \$2,500 STA travel voucher, and a Samsung 43" UHD 4K Smart TV.

You can purchase tickets from our Star Car when it parks up in malls and supermarkets across the region during November and December. You can also sell tickets on our behalf in your workplace, sports club, or group!

Visit [ChristmasStar.co.nz/raffle](http://ChristmasStar.co.nz/raffle), or email [enquiries@wgtncitymission.org.nz](mailto:enquiries@wgtncitymission.org.nz) to find out more.



## STREET DAY



Get involved in our annual Street Day Collection on **Friday 1 December!**

We rely on hundreds of volunteers to help us collect across Greater Wellington on Street Day and we'd love to have you as part of the team. We can match you up with a time and location that suits you – there are collection sites around Wellington City, Porirua and the Hutt Valley. There's also the opportunity for businesses, groups or clubs to manage their own collection sites!

Head to [ChristmasStar.co.nz/collect](https://ChristmasStar.co.nz/collect) or email [ella@wgtncitymission.org.nz](mailto:ella@wgtncitymission.org.nz) to find out more.

## PACK THE BUS

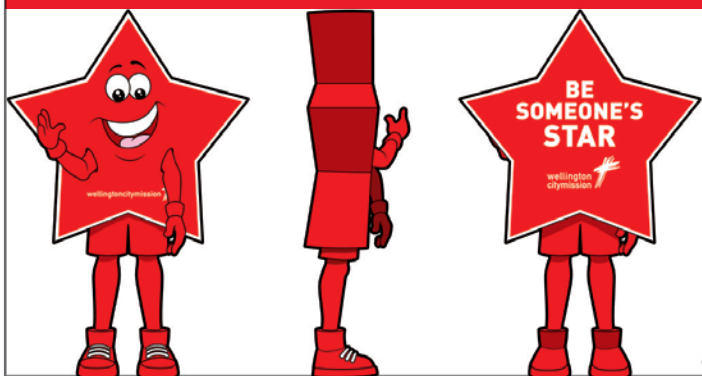


This year we're celebrating 25 Years of Pack the Bus and our partnership with The Breeze!

The iconic bus will be travelling around schools and supermarkets from **20 November – 1 December**, collecting food and gifts for The Mission and spreading Christmas joy.

Thank you to everyone who has contributed to Pack the Bus over the last 25 years and made it such an iconic Wellington event – here's to another successful ride this year!

## MEET STARRY!



Meet Starry, our brand new Christmas Star mascot! Starry represents everyone across Greater Wellington who's being a star to people in need. He'll be making appearances around the region throughout November and December. You might find him down at the Walk of Fame, collecting on Street Day, or selling raffle tickets at the Star Car in malls and supermarkets. He's cheerful and friendly, so if you see him make sure you say hi – or even ask for a photo!

## DONATE ONLINE



We're so grateful for the generous financial donations people make throughout the appeal. This financial support ensures we can continue helping people in need long after the Christmas decorations have come down.

Donate online at any time: [ChristmasStar.co.nz/donate](https://ChristmasStar.co.nz/donate)

Because of your generous support, last year we were able to feed around **3,000** people through our Christmas food parcels and provide kids with over **9,300** gifts to enjoy on Christmas Day. We were also able to support **31** other agencies – making a real difference right across our region. It's time to do it again!

**Visit [ChristmasStar.co.nz](https://ChristmasStar.co.nz)**